



First semester
Winter 2023/2024

Second semester
Summer 2023/2024

Third semester
Winter 2024/2025

Fourth semester
Summer 2024/2025

Master of Science in Electrical Engineering

1) CONTROL IN ELECTRICAL POWER ENGINEERING

2) Double – Degree (DD) Programme

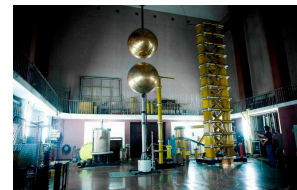
In cooperation with **RWTH Aachen University**

1) Control In Electrical Power Engineering – devoted to candidates with BSc/B.Eng. diploma (in electrical engineering or related field). All lectures, laboratories, tutorials and seminars are taught in English. The programme is focused on new and challenging issues of power system automation and control. The programme is devoted to the candidates interested in work related to electric power system control, reliability, transmission and distribution of electrical energy, protection and decision-making in power systems, energy market issues etc.

More information: <http://weny.pwr.edu.pl/en/students/programme-of-studies>

2) Double – Degree is an optional programme in addition to the standard full 4 semester Master Programme in Wrocław. DD is based on a bilateral agreement between the Wrocław University of Science and Technology and the partner university. Master Programme requires a parallel admission process performed simultaneously at both partner Universities. Therefore the list of required documents, registration to admission systems depends on the individual rules of the partner Universities. Final acceptance to the DD programme is achieved on when accepted by both partner Universities.

More information: <http://weny.pwr.edu.pl/en/candidates/msc-programme-in-english>



CONTACTS

Admission Office

Wrocław University of Science and Technology

E – mail: admission@pwr.edu.pl

Phone: +48 71 320 4163, fax: +48 71 320 3570

The web site of Admission Office of WUST:

<https://rekrutacja.pwr.edu.pl/en/admission/>

Faculty Coordinator for International Exchange Programmes and Double Degree

Justyna Herlender

E – mail: international_w05@pwr.edu.pl

Phone: +48 71 320 38 00

Dean's office for Electrical Engineering in English

Katarzyna Czechowska

E – mail: katarzyna.czechowska@pwr.edu.pl

Phone: +48 71 320 26 15

Admission Office

RWTH Aachen University

E – mail: incomings@rwth-aachen.de

Phone: +49 2 41 80 90 832

Fax: + 49 241 80 92661

Contact person for TIME Double Degree at International Office

Claudia Hanke

E – mail: claudia.hanke@zhv.rwth-aachen.de

Support of T.I.M.E. Incomings, Application at RWTH

Elina Krause

E – mail: incomings@rwth-aachen.de

Contact person for TIME Double Degree at Faculty of Electrical Engineering

Dr. Kerstin Jenkes

jenkes@fb6.rwth-aachen.de

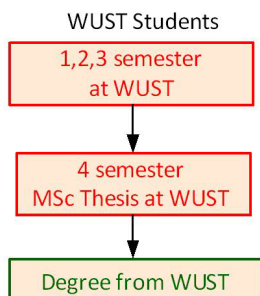
Parallel admission at WUST and RWTH is required

Application deadline:

20.07.2023 at WUST

20.07.2023 at WUST/31.05.2023 at RWTH

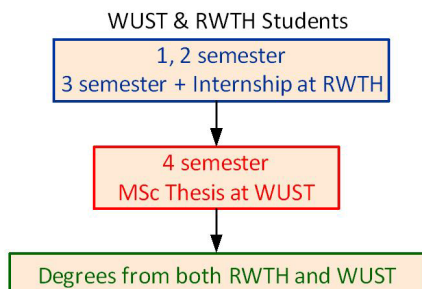
WUST Standard Programme Structure: 4 sem.



Wrocław
University
of Science
and Technology

RWTH - WUST Joint Programme Student Exchange Structure: 3 sem. / 1 sem.

**option for a limited number of best applicants*



Wrocław
University
of Science
and Technology

**RWTHAACHEN
UNIVERSITY**



Wrocław University
of Science and Technology

Faculty of Electrical Engineering

**RWTHAACHEN
UNIVERSITY**

Organisation of studies: WUST programme only

- full four-semester duration of the MSc studies at WUST including three theory semesters and Master's Thesis semester, programme includes a 4-week internship (industrial placement)

Candidates

- candidates with the BSc/B.Eng. diploma from EU/EFTA and non-EU countries (preferably BSc in electrical/ electronic / thermal or related field)

Linguistic demands

- students and alumni of WUST – passed English at the B2 level (min. score 4.0) – only standard 4 semester programme in WUST

- EU and non-EU candidates <https://rekrutacja.pwr.edu.pl/en/admission/>

Tuition fees

- non-EU candidates – (2000 EUR/semester)
- home and EU candidates – free of charge

Important enrolment deadlines

- submission of all required documents – **by July 20th, 2023** for the full Master Programme at WUST, Poland – current date – check <https://rekrutacja.pwr.edu.pl/en/admission/>
- paying tuition fee for the 1st semester of studies – by September 30th, 2023

Admission procedures

- admission procedures for full-time students are defined by Admission Office in cooperation with International Office of WUST

Details can be found at:

<https://rekrutacja.pwr.edu.pl/en/admission/>

<http://dwm.pwr.edu.pl/en/international-students>

Double-Degree Programme : RWTH (1 – 3 sem. + Internship)/ WUST (4 sem.)*

Organisation of studies

- three semester with internship at RWTH, Master's thesis semester at WUST

Candidates

- recruitment students of MSc programme at WUST (DD option), 1st semester of studies
- students matriculated at MSc programme at RWTH (DD option), internship semester and 1st or 2nd semester of studies
- BSc/B.Eng. in electrical engineering or related fields with an overall grade min. good

Linguistic demands

- EU and non-EU candidates – TOEFL test with a minimum score of 213 points (computer based) or 79 points internet-based; IELTS (min. 6.5); CAE Cambridge Advanced English (min. grade B); CPE Cambridge Certificate of Proficiency (min. grade B), UNICERT III
- students and alumni of WUST – passed English at the B2 level (min. score 4.0)

Tuition fees

- non-EU candidates – 2000 EUR/semester tuition fee at WUST or respectively tuition fee at RWTH
- no tuition fee for students matriculated at MSc Programme at WUST and students matriculated at MSc programme at RWTH (DD option) as partner Universities

Important enrolment deadlines

- submission of all required documents – **by May 31st, 2023 at RWTH**
- submission of all required documents – **by July 20th 2023 at WUST**

International Master Course “Electrical Engineering – Information Technology and Computer Engineering”

Applying for Study in Double degree programme

<http://www.rwth-aachen.de/time-incomings>

Admission for academic year 2023/2024 is already open

Deadline 31.05.2023– Double Degree Programme*

All information concerning admission procedures are provided by the RWTH Aachen International Office.

Please visit the <http://www.rwth-aachen.de/exchange-students>

If necessary, select the English version.

RWTH requires an official nomination from the partner university and an online registration in admission system and following documents from the student:

1. Online registration form signed by home university coordinator
2. Transcript of Records (an overview of your academic achievements at your home university)
3. Letter of motivation, one to two pages
4. CV, one to two pages

[Link](#) to application procedure.

The application documents mentioned above need to be uploaded in the online registration system and if necessary sent by email. Original documents per post are not required. The complete application is forwarded to the faculty's TIME Double Degree coordinator for approval. The International Office conveys the information about admission to the student, provides the official admission letter and informs about the online enrolment procedure. TIME Double Degree students at RWTH, who need to attain a B1 level for their studies in German, are invited to participate in an intensive German language Course at RWTH Language Center in September of each year. The participation for TIME Double Degree students to DEUTSCH International is free of charge. The International Office has a small allotment of rooms in student dorms, for which TIME Double Degree students are also eligible to apply. No guaranty can be given but the International Office provides further information on that procedure. The students should arrive in Aachen at least two weeks before the start of classes in order to attend the [Welcome Week](#), complete administrative procedures and meet their faculty's coordinator, if necessary.