



First semester
Winter 2023/2024

Second semester
Summer 2023/2024

Third semester
Winter 2024/2025

Fourth semester
Summer 2024/2025

Master of Science in Electrical Engineering

1) RENEWABLE ENERGY SYSTEMS

2) Double – Degree (DD) Programme

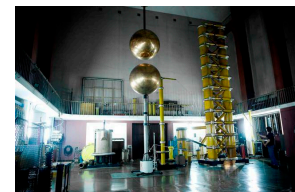
In cooperation with **Otto-von-Guericke University in Magdeburg**

1) Renewable Energy Systems – The programme is focused on new and challenging issues of renewable energy sources, their technology and integration into power networks, including also the courses related to power electronics, power quality and electromagnetic compatibility, numerical methods, protection and control of networks with distributed generation.

More information: <http://weny.pwr.edu.pl/en/students/programme-of-studies>

2) Double – Degree is an optional programme in addition to the standard full 4 semester Master Programme in Wrocław. DD is based on a bilateral agreement between the Wrocław University of Science and Technology and the partner university. Master Programme requires a parallel admission process performed simultaneously at both partner Universities. Therefore the list of required documents, registration to admission systems depends on the individual rules of the partner Universities. Final acceptance to the DD programme is achieved on when accepted by both partner Universities.

More information: <http://weny.pwr.edu.pl/en/candidates/msc-programme-in-english>



CONTACTS

Admission Office

Wrocław University of Science and Technology

E – mail: admission@pwr.edu.pl

Phone: +48 71 320 4163, fax: +48 71 320 3570

The web site of Admission Office of WUST:

<https://rekrutacja.pwr.edu.pl/en/admission>

Faculty Coordinator for International Exchange Programmes and Double Degree

Justyna Herlender

E – mail: international_w05@pwr.edu.pl

Phone: +48 71 320 38 00

Dean's office for Electrical Engineering in English

Katarzyna Czechowska

E – mail: katarzyna.czechowska@pwr.edu.pl

Phone: +48 71 320 26 15

International Office

Otto von Guericke University Magdeburg

Eva Böhning

E – mail: eva.boehning@ovgu.de

Phone: + 49 391 67 58 429

Fax: + 49 391 67 41 132

Anne-Katrin Behnert

E – mail: anne-katrin.behnert@ovgu.de

Tel.: +49 391 67 52 634

Fax: +49 391 67 41 132

Chair of Electric Power Networks and Renewable Energy Sources

Melanie Baumgarten

E – mail: melanie.baumgarten@ovgu.de

Phone: + 49 391 67 58592

Fax: + 49 391 67 42408

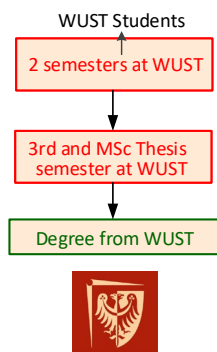
Parallel admission at WUST and OVGU is required

Application deadline:

20.07.2023 at WUST

20.07.2023 at WUST/15.07.2023 OVGU

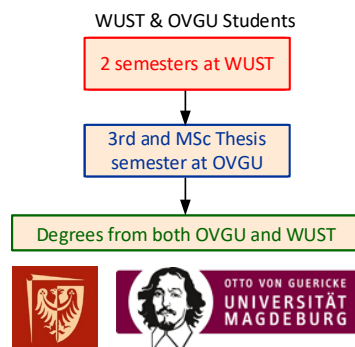
WUST Standard Programme Structure: 4 sem.



Wrocław
University
of Science
and Technology

OVGU - WUST Joint Programme Student Exchange Structure: 2 sem. / 2 sem.

**option for a limited number of best applicants*



Wrocław
University
of Science
and Technology



OTTO VON GUERICKE
UNIVERSITÄT
MAGDEBURG



Wrocław University
of Science and Technology

Faculty of Electrical Engineering



OTTO VON GUERICKE
UNIVERSITÄT
MAGDEBURG

Organisation of studies: WUST programme only

- full four-semester duration of the MSc studies at WUST including three theory semesters and Master's Thesis semester, programme includes a 4-week internship (industrial placement)

Candidates

- candidates with the BSc/B.Eng. diploma from EU/EFTA and non-EU countries (preferably BSc in electrical/ electronic / thermal or related field)

Linguistic demands

- students and alumni of WUST – passed English at the B2 level (min. score 4.0) – only standard 4 semester programme in WUST
- EU and non-EU candidates <https://rekrutacja.pwr.edu.pl/en/admission>

Tuition fees

- non-EU candidates – (2000 EUR/semester)
- home and EU candidates – free of charge

Important enrolment deadlines

- submission of all required documents – **by July 20th 2023** for the full Master Programme at WUST, Poland – current date – check <https://rekrutacja.pwr.edu.pl/en/admission>
- paying tuition fee for the 1st semester of studies – by September 30th, 2023

Admission procedures

- admission procedures for full-time students are defined by Admission Office in cooperation with International Office of WUST

Details can be found at:

<https://rekrutacja.pwr.edu.pl/en/admission>

<http://dwm.pwr.edu.pl/en/international-students>

Double-Degree Programme : WUST (1-2 sem.) / OVGU (3-4 sem.)

Organisation of studies

- First year of MSc studies at WUST with 4-week internship (industrial placement) and second year (including Master's Thesis) at OVGU

Candidates

- BSc/B.Eng. in electrical engineering or related fields with an overall grade min. good

Linguistic demands

- EU and non-EU candidates – TOEFL test with a minimum score of 213 points (computer-based) or 79 points internet-based; IELTS (min. 6.0); CAE Cambridge Advanced English (min. grade C); CPE Cambridge Certificate of Proficiency (min. grade B), UNICERT III,
- students and alumni of WUST – passed English at the B2 level (min. score 4.0)

Tuition fees

- non-EU candidates – 2000 EUR/semester tuition fee at WUST or respectively tuition fee at OVGU
- no tuition fee for students matriculated at MSc Programme at WUST and students matriculated at MSc programme at OVGU (DD option) as partner Universities

Important enrolment deadlines

- submission of all required documents – **by July 15th, 2023 at OVGU**
- submission of all required documents – **by July 20th, 2023 at WUST**

All information concerning Master Programme in Electrical Engineering and Information Technology is available at:

<http://www.uni-magdeburg.de/unimagdeburg/en/Education/Prospective+International+Students/Study+Guide/Master/Electrical+Engineering+and+Information+Technology-p-17627.html>

General information about admission procedures are provided by OVGU Magdeburg International Office:

<http://www.ovgu.de/unimagdeburg/en/International/Incomings/Applicants/Full+Time+Studies.html>

OVGU requires personal registration in admission system; however, international applicants applying on the basis of bilateral university agreements (Double Degree Programme) send their applications to the university directly without Uni-Assist service

<http://www.uni-magdeburg.de/unimagdeburg/en/international-p-5.html>