



First semester
winter 2023/2024

Second semester
summer 2023/2024

Third semester
winter 2024/2025

Fourth semester
summer 2024/2025

Master of Science in Electrical Engineering

1) **CONTROL IN ELECTRICAL POWER ENGINEERING**

2) **Double – Degree (DD) Programme**

In cooperation with **Ryerson University**

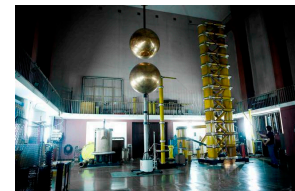
1) Control In Electrical Power Engineering – devoted to candidates with BSc/B.Eng. diploma (in electrical engineering or related field). All lectures, laboratories, tutorials and seminars are taught in English. The programme is focused on new and challenging issues of power system automation and control. The programme is devoted to the candidates interested in work related to electric power system control, reliability, transmission and distribution of electrical energy, protection and decision-making in power systems, energy market issues etc.

More information: <http://weny.pwr.edu.pl/en/students/programme-of-studies>

2) Double – Degree is an optional programme in addition to the standard full 4 semester Master Programme in Wrocław. DD is based on a bilateral agreement between the Wrocław University of Science and Technology and the partner university. Master Programme requires a parallel admission process performed simultaneously at both partner Universities. Therefore the list of required documents, registration to admission systems depends on the individual rules of the partner Universities. Final acceptance to the DD programme is achieved on when accepted by both partner Universities.

More information:

<http://weny.pwr.edu.pl/en/candidates/msc-programme-in-english>



CONTACTS

Admission Office

Wrocław University of Science and Technology

E – mail: admission@pwr.edu.pl

Phone: +48 71 320 4163, fax: +48 71 320 3570

Admission Office

Dawn Wright

E – mail: gradinfo@ee.ryerson.ca

Phone: 416-979-5000 x7841

The web site of Admission Office of WUST:

<https://rekrutacja.pwr.edu.pl/en/admission>

Faculty Coordinator for International Exchange Programmes and Double Degree

Justyna Herlender

E – mail: international_w05@pwr.edu.pl

Phone: +48 71 320 43 95

Dean's office for Electrical Engineering in English

Katarzyna Czechowska

E – mail: katarzyna.czechowska@pwr.edu.pl

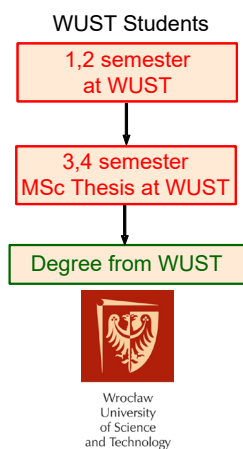
Phone: +48 71 320 26 15

Parallel admission at WUST and RU is required

Application deadline:

20.07.2023 at WUST

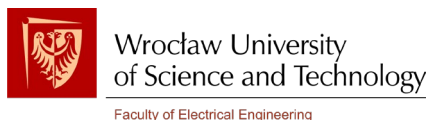
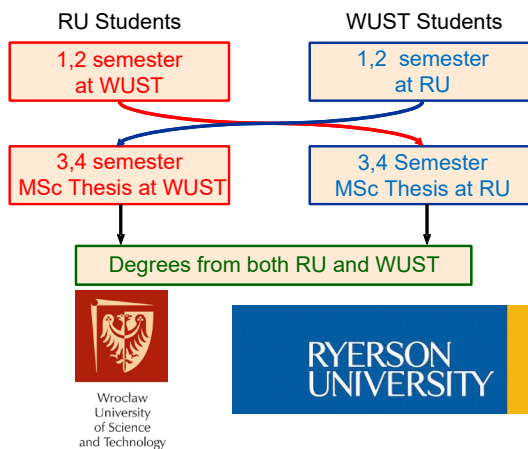
WUST Standard Programme
Structure: 4 sem.



20.07.2023/18.01.2023 at WUST/RU

RU - WUST Joint Programme Student Exchange
Structure: 2 sem. / 2 sem.

**option for a limited number of best applicants*



Organisation of studies: WUST programme only

- full four-semester duration of the MSc studies at WUST including three theory semesters and Master's Thesis semester, programme includes a 4-week internship (industrial placement)

Candidates

- candidates with the BSc/B.Eng. diploma from EU/EFTA and non-EU countries (preferably BSc in electrical/ electronic / thermal or related field)

Linguistic demands

- students and alumni of WUST – passed English at the B2 level (min. score 4.0) – only standard 4 semester programme in WUST
- EU and non-EU candidates <https://rekrutacja.pwr.edu.pl/en/admission>

Tuition fees

- non-EU candidates – (2000 EUR/semester)
- home and EU candidates – free of charge

Important enrolment deadlines

- submission of all required documents – **by July 20th, 2023** for the full Master Programme at WUST, Poland – current date – check <https://rekrutacja.pwr.edu.pl/en/admission>
- paying tuition fee for the 1st semester of studies – by September 30th, 2023

Admission procedures

- admission procedures for full-time students are defined by Admission Office in cooperation with International Office of WUST
Details can be found at:

<https://rekrutacja.pwr.edu.pl/en/admission>

<http://dsm.pwr.edu.pl/en/international-students>

Double-Degree Programme : RU (1 – 2 sem.)/ WUST (3 – 4 sem.+ Internship)*

Organisation of studies

- two first semesters of MSc studies at RU and third and Master's Thesis semester at WUST, programme includes a 4-week internship

Candidates

- recruitment students of MSc programme at WUST (DD option), 1st semester of studies
- students matriculated at MSc programme at RU (DD option), internship semester and 1st or 2nd semester of studies
- BSc/B.Eng. in electrical engineering or related fields with an overall grade min. good

Linguistic demands

- EU and non-EU candidates – TOEFL test with a minimum score of 93 points, the Michigan English Language Assessment Battery (MELAB) test with a minimum score of 85)

Tuition fees

- non-EU candidates – 2000 EUR/semester tuition fee at WUST or respectively tuition fee at RU
- no tuition fee for students matriculated at MSc Programme at WUST and students matriculated at MSc programme at RU (DD option) as partner Universities

Important enrolment deadlines

- submission of all required documents – **by January 18th, 2023 at RU**
- submission of all required documents – **by July 20th, 2023 at WUST**

Future Students / Admissions

<https://www.ryerson.ca/graduate/future-students/>

Programs

<https://www.ryerson.ca/graduate/programs/>

Admission Requirements

<https://www.ryerson.ca/graduate/future-students/apply/requirements/>

How to Apply

<https://www.ryerson.ca/graduate/future-students/apply/>